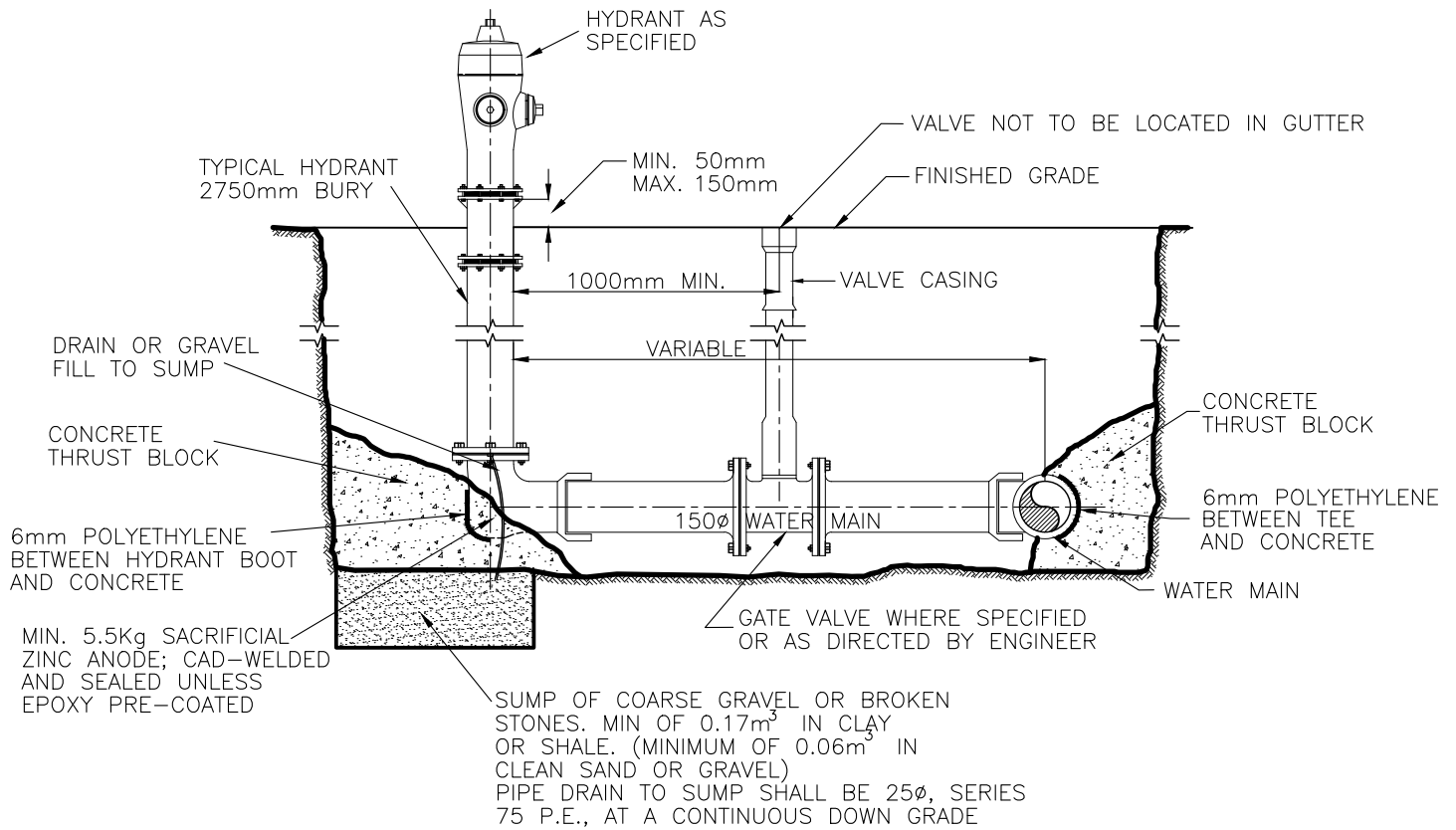


SIZE OF SUMP	HYDRANT BASE	PAD
	SOIL TYPE	SIZE OF PAD
0.17m <sup>3</sup>	SOFT CLAY	2 m <sup>2</sup>
0.06m <sup>3</sup>	SAND	1 m <sup>2</sup>
0.06m <sup>3</sup>	SAND AND GRAVEL	0.7m <sup>2</sup>
0.06m <sup>3</sup>	SAND AND GRAVEL CEMENTED WITH CLAY	0.5m <sup>2</sup>
0.17m <sup>3</sup>	SHALE	0.2m <sup>2</sup>



**NOTES**

1. HYDRANT LEAD FROM MAIN TO BE 150Ø PVC AWWA C-900 CL 140 PIPE, CSA B137.3-M86
2. THRUST BLOCKS SHALL BE OF CONCRETE OBTAINING A COMPRESSIVE STRENGTH OF AT LEAST 32MP<sub>a</sub> @ 28 DAYS; CEMENT TO BE TYPE 50 (SULPHATE RESISTANT)
3. HYDRANTS SHALL BE MUELLER OR DARLING - CANADA VALVE THREE-WAY HYDRANT DRY BARREL. THE COLOUR OF THE HYDRANT ABOVE GROUND SHALL BE RED. NO ALTERNATES.

			<b>CITY OF PRINCE ALBERT PUBLIC WORKS</b>		APPROVED <i>Wes Hicks</i>
			<b>NEW HYDRANT CONNECTION</b>		SCALE N.T.S.
No.	DATE	REVISION	DRAWN S. NUMEDAHL	DESIGNED N. MILLER	DWG. No. 00-01-01
			DATE OCT. 2014		